

FLUORO-4

Fluoroscopy Phantom

Leeds Test Objects' FLUORO-4 phantom is designed to be used to check the image quality performance of digital and conventional fluoroscopy x-ray systems. These tests should be carried out at acceptance to establish a baseline, and on a routine basis, keeping an on-going record of the test results, which will indicate any deterioration in performance.

FLUORO-4 has been designed in accordance with the **DIN 6868-4** standard and features the following test details:

- Tube axis direction markings
- Limiting spatial resolution (0.6 – 5.0 LP/mm)
- Low contrast resolution details (8 x 10mm diameter details, depths 0.4 – 4.0 mm)
- Dynamic range (17 different thickness Cu steps each with a central 4.0mm diameter detail, depth 2.5 mm)
- kV test-area (Yb 0.78mm)
- Unstructured inner area (centre-marked)
- Radiopaque numbers indicating dynamic range steps

The phantom is supplied in a soft protective carry bag.

FLUORO-4 should be used with either PMMA/Cu or Al attenuator plates (available separately).





FLUORO-4

Fluoroscopy

Product Detail

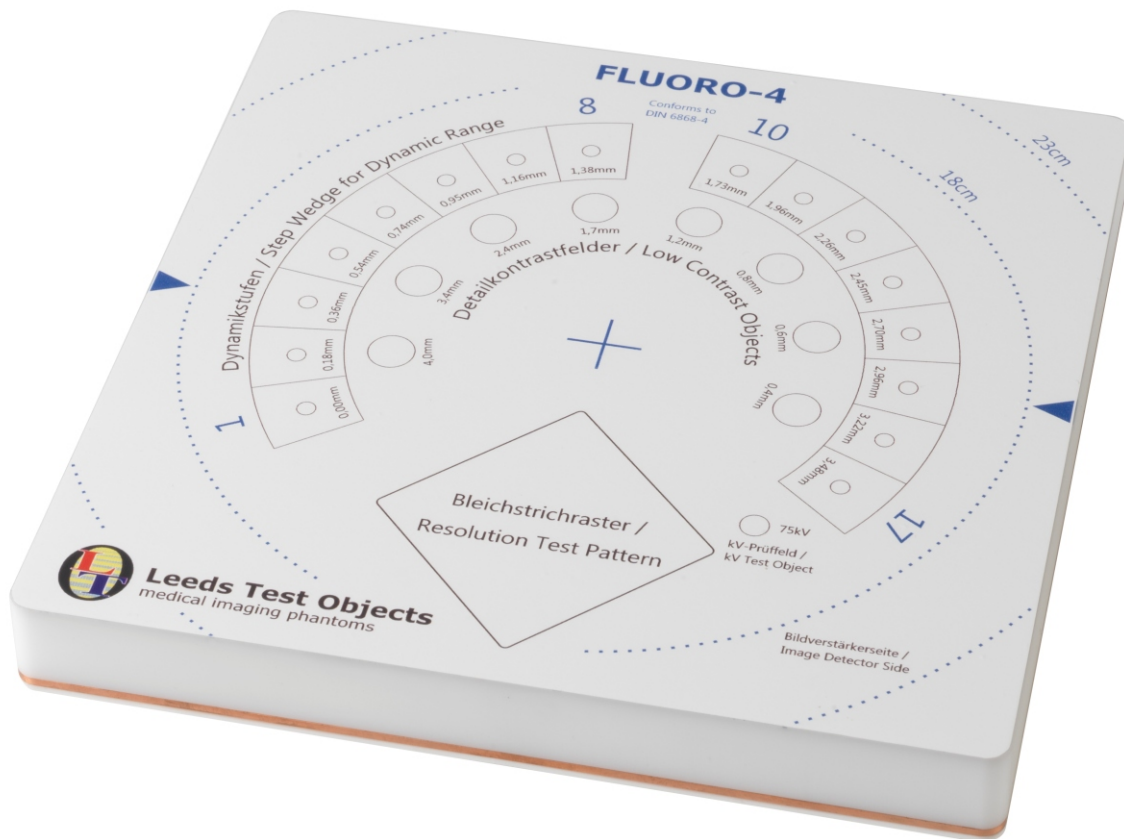


fig. 1 Fluoro-4 phantom

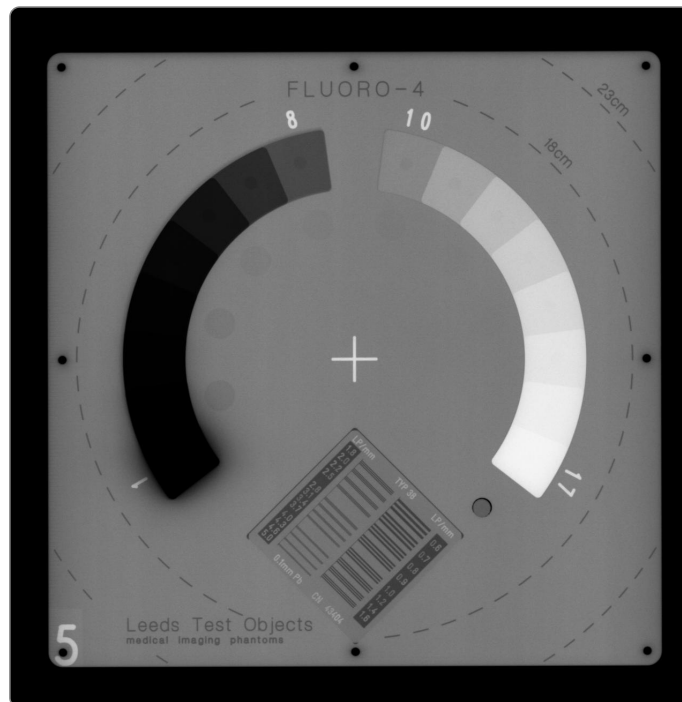


FLUORO-4

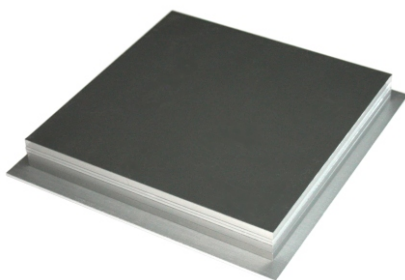
Fluoroscopy

Product Detail

fig. 2 Fluoro-4 radiograph



Accessories



An Aluminium attenuator for use with Fluoro-4 is available separately.

www.leadstestobjects.com