

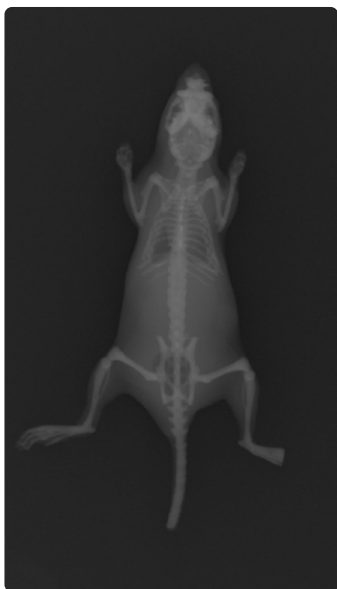
# Mouse Phantom

## Pre-clinical CT Phantoms

The Leeds MicroCT Mouse Phantom is a tissue mimicking, pontikiomorphic (in the form of a mouse) phantom for use in demonstrating and assessing image quality of pre-clinical MicroCT scanners.

The phantom includes;

- Tissue mimicking skeleton
- Tissue mimicking lung
- Tissue mimicking soft tissue  
(choice of clear (CT# c.90) or grey (CT# c.0))



\* This phantom was developed as part of a project funded by Innovate UK

**Ask for optional items:**

Embedded tumours