

# Accugel Phantom

Striving for realism through simulation



**Quality Assurance**



**Customer Satisfaction**



**NDR Medical Technology Pte. Ltd.**



admin@ndrmedical.com



www.ndrmedical.com



75 Ayer Rajah Crescent, Singapore 139953



## Realistic

- Realistic tissue imaging
- Lifelike tactile feedback
- Simulation of needle deflection



## Durable

- Consistent and reproducible
- Reusable after multiple punctures
- Manufactured with medical grade gel



## Convenient

- Compact with small footprint
- Easy deployment and storage
- Long shelf life

\* NDR Medical Technology reserves all rights to change or stop promotions without any prior notice.

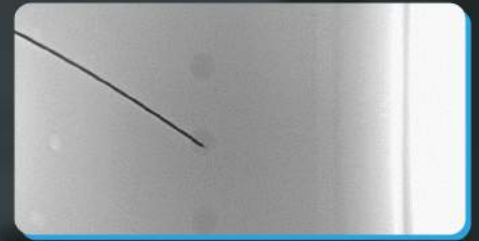
\*\* Subjected to number and dimension of target withstanding core biopsy till target is completely removed. Recommended usage of 18 - 21 gauge sharp, unbent needles to maximize durability performance of phantom.



**Lifelike Tactile Feedback**  
to simulate needle resistance and fix needle entry position



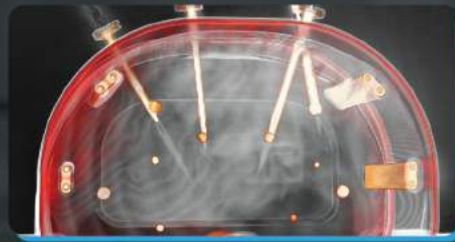
**Compact with Small Footprint**  
for easy deployment and storage



**Durable and Reusable**  
after multiple punctures



**Varying Target Sizes and Depth**  
also progressively challenge competency in speed and accuracy while permitting trainees to experience different magnitudes of needle deflection at respective depths



**Realistic Tissue Imaging with Excellent Visibility**  
Targets placed at various depths are made to give high visibility under imaging modalities



**Body Curvature Design**  
to mimic human contour and standardise depth from multiple access angles

## Clinical Benefits



Enhance  
**hand-eye  
coordination**



**Progressive  
training**  
for trainees



**Consistent &  
scalable**  
for workshops



Improve  
**confidence &  
procedural  
skills**



Evaluation of  
**new techniques  
& equipment**

## Compatible Imaging Modalities



**Computed  
Tomography**



**Fluoroscopy**



**Ultrasound**

## Technical Specifications

| Specifications                                      | Accugel Phantom              |
|---|------------------------------|
| Materials   | Medical Grade Gel            |
| Storage Condition                                   | Room Temperature             |
| Dimensions of Phantom (mm)<br>Length, Width, Height | L:288 W:138 H:210<br>(6.3kg) |

\* NDR Medical Technology reserves all rights to change or stop promotions without any prior notice.

\*\* Subjected to number and dimension of target withstanding core biopsy till target is completely removed. Recommended usage of 18 - 21 gauge sharp, unbent needles to maximize durability performance of phantom.